



Heimgard

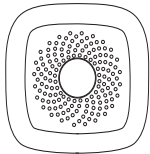
Temp and Humidity Sensor

Quick start guide
version 1.0

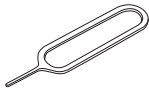
Requires a
heimgard hub

What is in the box

A.
Temp and Humidity sensor



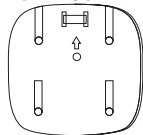
C.
Metal pin



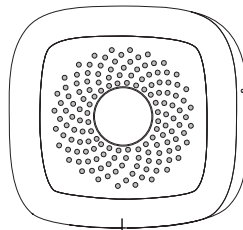
B.
CR 2450 battery x 1



D.
Wall mount

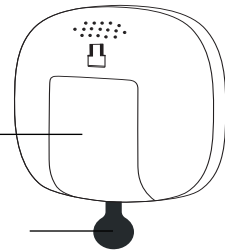


Device overview



F.
LED indicator

E.
Join/Reset button

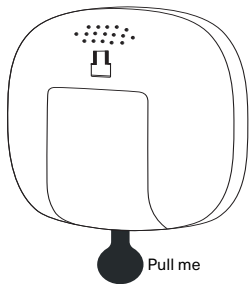


G.
Battery Cover

H.
Battery Insulator

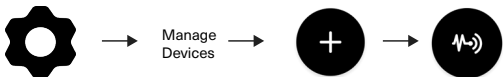
1.

Remove the wall mount (D) and the battery cover (G). Then remove battery insulator (H) by pulling the plastic tab. Replace the back cover.



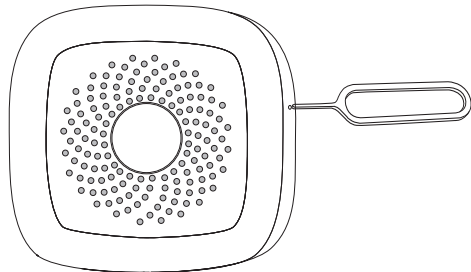
2.

Open the Heimgard app and follow the steps listed here to connect to your device



3.

Insert the metal Pin (C) and press join button (E) for 3 seconds while your app is scanning for the device



4.

Your device will appear in the Found Devices list. Click **configure** to add the device to a specific room

Configure and use

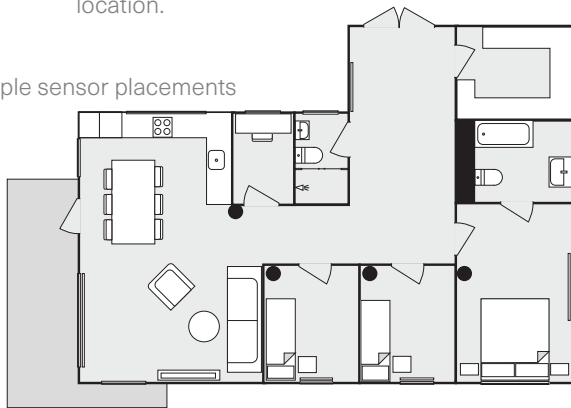
Generic: In the app you can monitor temperature and humidity of the room where device is placed

Climate Control: If you have a smart temperature sensor and a Smart Plug, connect a heater or fan to the Smart Plug and you can control the climate conditions of the room. Automate the temperature with Schedules and Scenes

Mounting

Remove protective layer on the double-sided tape on the **wall mount (D)**. Press the wall mount firmly against the wall at the desired location.

Example sensor placements



Troubleshooting

If device disconnects unexpectedly, check the battery.

Avoid Placing

- Outside
- Above or below heating or cooling system
- Direct contact with water

LED description

Flashes fast:	Pairing to network
Flashes (x 6):	Disconnecting from network

Factory Reset

Insert the **Metal Pin (C)** and press **Reset Button (E)** for 5 seconds to disconnect the device from the network. The LED will flash (x 6) while disconnecting from network

Need help?

Website: heimgard.com/support

Email: support@heimgard.com

Facebook: facebook.com/heimgardnorge/

Telephone: +47 649 44 422

Visit heimgard.com for more information and tips on how to use.

Important safety information


1. Read through these instructions and follow accordingly.
2. Clean only with dry soft cloth. Household cleaners and solvents can damage the finish on your device.
3. Do not install near any heat sources such as radiators, heat registers, stoves or other device that produce heat.
4. Do not use this device near water.
5. Warning: To reduce the risk of fire or electric shock, do not expose this device to rain or moisture.
6. Do not expose device to dripping or splashing.
7. Protect the attached cables from being walked on or pinched, particularly at plugs, convenience receptacles, and the point the exit the apparatus.
8. Only use attachments/accessories specified by the manufacturer.
9. Unplug this device during lightning storms or when unused for long periods of time.
10. All servicing should be performed by qualified service personnel. Servicing is required when the device has been damaged in any way.
11. Operating temperature: -15°C to +60°C
12. Operating relative humidity: < 95% RH (no condensation)



Dispose the product properly at the end of life. This is electronic waste which should be recycled accordingly.



Heimgard

 heimgard.com