



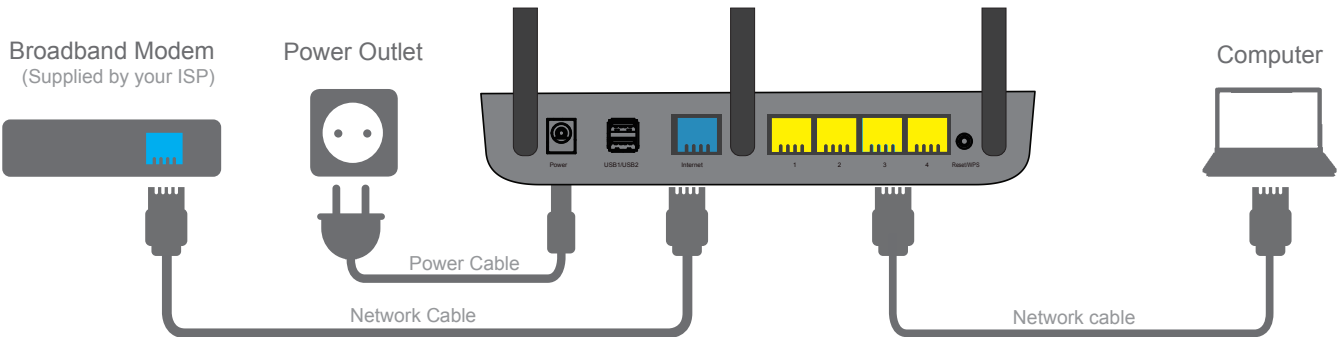
1

CONNECTING

- A) Connect the power adapter to the router and to a power outlet.
- B) Connect the enclosed network cable from your internet modem to the blue internet port on the router.



- If your internet is delivered through cable-tv you should also ensure the following:
- a) Make sure there is no devices connected to your modem.
 - b) Reset the modem by doing a power off/on.
 - c) Wait further 2 minutes
 - d) Continue with step 2



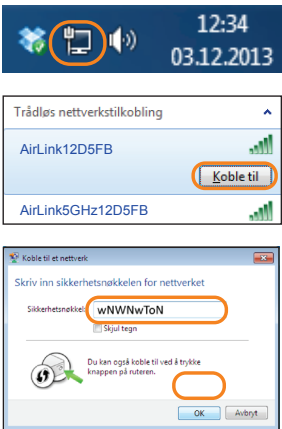
2

CONNECT TO WIRELESS NETWORK

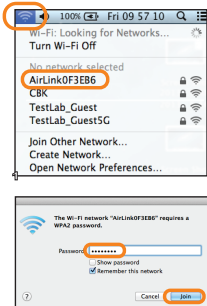
Your new router has two wireless networks. One for 2.4GHz and one for 5GHz. The router is pre-configured with network names and passwords. These are stated on the top of your router and the underside sticker.

Search for the wireless networks with your device and connect.
Please note that some devices may not support the latest 5GHz technologies, if not, your device will only see one wireless network when searching.

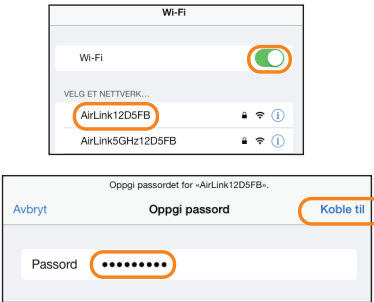
PC



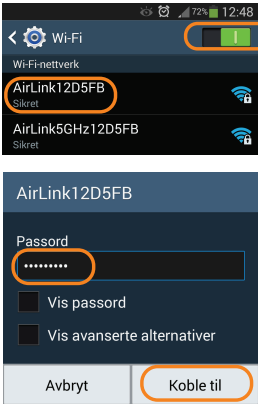
Mac



iPhone/iPad



Android



FINISH

Your wireless device is now connected to internet and ready for use.

Problem

Solution

- No access to internet → Log into the router menu by entering <http://192.168.38.1> in your web browser. Username = admin og password = 1234. Select **EASY SETUP** from main menu and follow the setup wizard
- Change network name → Log into the router menu by entering <http://192.168.38.1> in your web browser. Username = admin og password = 1234. Select **WIRELESS** from main menu
- Change encryption key → Log into the router menu by entering <http://192.168.38.1> in your web browser. Username = admin og password = 1234. Select **WIRELESS** from main menu
- Change channel → Log into the router menu by entering <http://192.168.38.1> in your web browser. Username = admin og password = 1234. Select **WIRELESS** from main menu. Select the channel you want to use.

Customer support

If you need help with the setup you can call our free phone support. When calling you will be asked to enter an support-id. This is stated on top and underside sticker.

Norway 22 32 30 76
Sweden 08 38 30 00
Denmark 70 70 21 22
Finland 09 455 21 22

or send an email to support@jensenscandinavia.com