

HL3200 ABC

The HL3200 uses the powerlines in your house to transmit and receive data. In your HL3200 package there are two devices that are pre-connected to each other. Easily explained HL3200 replaces a network cable from A to B. HL3200 works very well most places, but it still depends on how the power wiring is set up, and the quality of it.

- 1 - Setup and placement
- 2 - How to check status ?
- 3 - Reset and pairing
- 4 - How to add a new HL3200

1) Setup

Connect one of the HL3200 in a wall socket close to where you have your internet router. Connect a network cable between HL3200 and one of your routers LAN ports. Now connect the other HL3200 in a wall socket where you would like to have access to the internet. Connect a network cable between this second HL3200 and the network device.



Placement

We recommend that HL3200 is plugged directly into the wall socket. Avoid the use of any extension cords.

2) How to check status ?

HL3200 have three LED indicators:

1. Power.

2. Connection Quality indicator.

- Shows the connection quality between your HL3200 devices using a colour code.

3. Network. Show network connection status.



On successful connection, all LEDs will look like the below picture.



If the Connection LED(2) is not ON, the HL3200 is not correctly paired, or your devices are not able to establish a connection.

To check if the two HL3200 are functional, we suggest you try connecting both HL3200 in a double wall socket (next to each other) and then check if the Connection LED(2) is ON.

A) IF the Connection LED is now ON, the initial placement you tried is not suitable. Please try another location and check the Connection LED.

B) If the Connection LED is OFF, it means the two HL3200 are not correctly paired. Please see next page on how to reset and pair the HL3200.

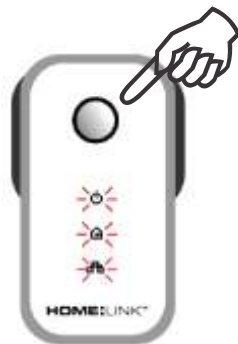
3) Reset and pairing

Reset HL3200 version 1:

A reset is done by pressing and hold the "Connect" button until all LED's is flashing red once.

Reset HL3200 version 2 and F:

A reset is done by pressing and hold the "Connect" button until "Power" LED is flashing once.



HL3200v1



HL3200v2/HL3200F

Pairing

In order for the HL3200 devices to encrypt traffic between them, they need to be paired together.

1. Put the two HL3200 devices in separate wall sockets and wait until they have started (Until power LED is ON)
2. Press the "Connect" button for 2 seconds on both HL3200 devices.
3. HL3200 will now be paired together.



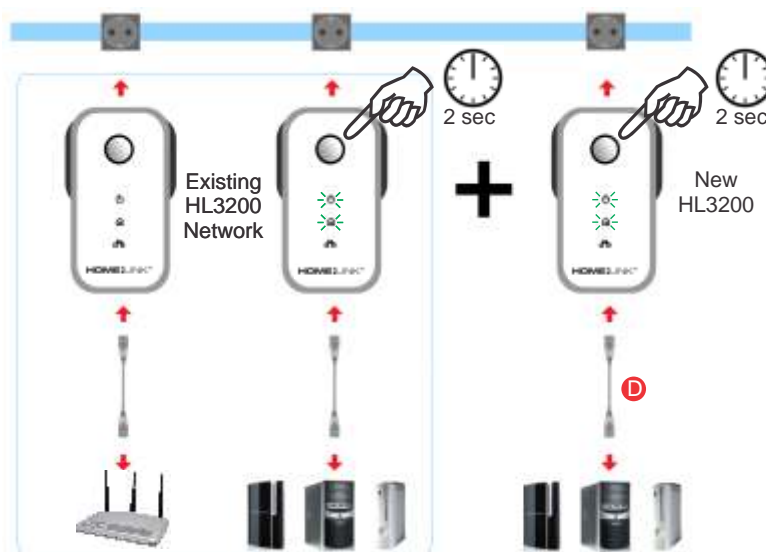
If pairing is successful the connection LED should be lit, on both devices. Your HL3200 are now ready for use.

4) How to add a new HL3200

You can have up to 10 pcs. of HL3200 connected in your home.

To add a new HL3200 just connect the new device in an available wall socket and press the «Connect» button for 2 seconds. Then do the same on one of your existing HL3200 devices. This will initiate the pairing process.

If pairing is successful the connection LED (in the middle) will be lit, on your new devices. Your new HL3200 is now ready for use.



Please note that all HL3200 share the connection, so adding more HL3200 devices may reduce the connection speed.