

# Jensen® SCANDINAVIA



## Operating manual



### **Media:Link 9005 DUO** 9" DVD CAR KIT WITH DUAL PLAYERS

Please read this manual carefully before operation

# PRECAUTIONS

	<b>CAUTION</b> <i>RISK OF ELECTRIC SHOCK</i> <i>DO NOT OPEN</i>	
<b>CAUTION:</b> TO REDUCE THE RISK OF FIRE AND ELECTRIC SHOCK, DO NOT REMOVE THE COVER (OR BACK) OF THE UNIT. REFER SERVICING ONLY TO QUALIFIED SERVICE PERSONNEL.		



The lightning flash with arrowhead symbol within an equilateral triangle is intended to alert the user to the presence of uninsulated "dangerous voltage" within the product's enclosure that may be of sufficient magnitude to constitute a risk of electric shock.



The exclamation point within an equilateral triangle is intended to alert the user to the presence of important operation and servicing instructions in the literature accompanying the appliance.

## **WARNING:**

To prevent fire or shock hazard, do not expose this device to rain or moisture. Dangerous high voltage is present inside the enclosure. Do not open the cabinet.

## **CAUTION:**

This Digital Video Disc player employs a laser system. To prevent direct exposure to the laser beam, do not try to open the enclosure or defeat the safety interlocks. When open and the interlocks are defeated, visible laser radiation is present. To prevent electric shock, match wide blade of plug to wide slot of outlet and fully insert.

Use of controls, adjustments, or performance of procedures other than those specified herein may result in hazardous radiation exposure. **DO NOT STARE INTO THE BEAM.**

## **NOTICE:**

This product incorporates copyright protection technology that is protected by U.S. patents and other intellectual property rights. Use of this copyright protection technology must be authorized by Macrovision, and is intended for home and other limited viewing uses only unless otherwise authorized by Macrovision. Reverse engineering or disassembly is prohibited.

Do not make any changes or modifications to the equipment unless otherwise specified in the manual. If such changes or modifications should be made, you could be required to stop operation of the equipment.

Manufactured under license from Dolby Laboratories. Dolby and the double-D symbol are trademarks of Dolby Laboratories. Confidential Unpublished Works.



This player has built-in copyright protection technology that prevents copying from a DVD disc to any media.

If a video recorder is connected to the player, the video output image will be distorted during recording.

**ABOUT DIVX VIDEO:** DivX® is a digital video format created by DivX, LLC, a subsidiary of Rovi Corporation. This is an official DivX Certified® device that plays DivX video. Visit [divx.com](http://divx.com) for more information and software tools to convert your files into DivX videos.

**ABOUT DIVX VIDEO-ON-DEMAND:** This DivX Certified® device must be registered in order to play purchased DivX Video-on-Demand (VOD) movies. To obtain your registration code, locate the DivX VOD section in your device setup menu. Go to [vod.divx.com](http://vod.divx.com) for more information on how to complete your registration.

# IMPORTANT SAFETY INSTRUCTIONS

1. **Read Instructions:** All the safety and operating instructions should be read before the product is operated.
2. **Retain Instructions:** The safety and operating instructions should be retained for future reference.
3. **Heed Warnings:** All warnings on the product and in the operating instructions should be adhered to.
4. **Follow Instructions:** All operating and usage instructions should be followed.
5. **Cleaning:** Unplug this product from the wall outlet before cleaning. Do not use liquid cleaners or aerosol cleaners. Use a damp cloth for cleaning.
6. **Attachments:** Use only attachments recommended by the manufacturer. Use of other attachments may be hazardous.
7. **Water and Moisture:** Do not use this product near water (e.g., near a bath tub, washbowl, kitchen sink, laundry tub, in wet basements, or near a swimming pool and the like).
8. **Accessories:** Do not place this product on an unstable cart, stand, tripod, bracket, or table. Use only with carts, stands, tripods, brackets, or tables recommended by the manufacturer or sold with the product. Any mounting of the product should follow the manufacturer's instructions and should use a mounting accessory recommended by the manufacturer.
9. A product and cart combination should be moved with care. Quick stops, excessive force, and uneven surfaces may cause the product and cart combination to overturn.
10. **Ventilation:** Slots and openings in the cabinet are provided for ventilation to ensure reliable operation of the product and to protect it from overheating. These openings should never be blocked by placing the product on a bed, sofa, rug, or other similar surface. This product should not be placed in a built-in installation such as a bookcase or rack unless proper ventilation is provided or the manufacturer instructions have been adhered to.
11. **Power Sources:** This product should be operated only from the type of power source indicated on the rating label. If you are not sure of the type of power supply to your home, consult your product dealer or local power company. For products intended to operate from battery power or other sources, refer to the operating instructions.
12. **Power-Cord Protection:** Power supply cords should be routed so that they are not likely to be walked on or pinched by items placed upon or against them, paying particular attention to cords at plugs, convenience receptacles, and at the point which they exit from the product.



# IMPORTANT SAFETY INSTRUCTIONS

13. **Lightning:** For added protection for this product, unplug it from the wall outlet and disconnect the antenna or cable system during a lightning storm or when it is left unattended and unused for long periods of time. This will prevent damage to the product due to lightning or power-line surges.
14. **Overloading:** Do not overload wall outlets, extension cords, or integral convenience receptacles as this can result in a risk of fire or electric shock.
15. **Object and Liquid Entry:** Never push objects of any kind into this product through openings as they may touch dangerous voltage points or short-out parts that could result in a fire or electric shock. Never spill liquid of any kind on the product.
16. **Servicing:** Do not attempt to service this product yourself as opening or removing covers may expose you to dangerous voltage or other hazards. Refer all servicing to qualified service personnel.
17. **Damage Requiring Service:** Unplug this product from the wall outlet and refer servicing to qualified service personnel under the following conditions: a) when the power-supply or plug is damaged; b) if liquid has been spilled or if objects have fallen into the product; c) if the product has been exposed to rain or water; d) if the product does not operate normally by following the operating instructions. Adjust only those controls that are covered by the operating instructions as improper adjustment of other controls may result in damage and will often require extensive work by a qualified technician to restore the product to its normal operation; e) if the product has been dropped or damaged in any way; f) when the product exhibits a distinct change in performance—this indicates a need for service.
18. **Replacement Parts:** When replacement parts are required, be sure that your service technician has used replacement parts specified by the manufacturer or have the same characteristics as the original part. Unauthorized substitutions may result in fire, electric shock, or other hazards.
19. **Heat:** The product should be situated away from heat sources such as radiators, heat registers, stoves, or other products (including amplifiers) that produce heat.
20. **Battery** shall not be exposed to excessive heat such as the sunshine, fire or the like. Danger of explosion if battery is incorrectly replaced. Replace only with the same or equivalent type.
21. **WARNING:** Excessive sound pressure from earphones and headphones can cause hearing loss.
22. **WARNING:** The mains plug (or direct plug in adaptor) is used as disconnect device, the disconnect device shall remain readily operable.

# TABLE OF CONTENTS

PRECAUTIONS .....	2
IMPORTANT SAFETY INSTRUCTIONS .....	3
TABLE OF CONTENTS .....	5
PACKAGE CONTENTS .....	7
ABOUT OPTICAL DISCS .....	8
Disc Requirements.....	8
Disc Care and Maintenance .....	8
Handling a Disc .....	8
Cleaning a Disc .....	8
LOCATION OF CONTROLS .....	9
Left View .....	9
Front View .....	9
Right View .....	9
Back View .....	10
Remote Control .....	11
GETTING STARTED .....	12
Using the remote control.....	12
Power Supply .....	12
CONNECTIONS .....	15
Power, Audio and Video Output Connections .....	15
Connecting to a wall outlet .....	15
Outputting AV signal from the main unit to the monitor by the DC car cord .....	15
Using the car plug .....	16
Outputting AV signal from the main unit to the monitor .....	16
Audio and Video Connectios ( external device) .....	17
Rechargeable Battery Pack .....	17
Using Headphones/Earphones .....	18
USB/SD/MMC Card Connection .....	18
BASIC OPERATIONS .....	19
Basic Playback .....	19
Play/Pause/Stop .....	19
Previous /Next (Skip) .....	19
Forward/Reverse (Search) .....	19
Slow/Step .....	19
Menu Navigation .....	19
Numeric Keypad .....	20
Disc Error Messages .....	20
Power Management .....	20
FUNCTION BUTTONS .....	21
Display/Setup .....	21
Zoom .....	21
Multi-Subtitle/Audio/Angle .....	21
SUB .....	21
Audio .....	21

# TABLE OF CONTENTS

Angle .....	21
Menu/Title .....	21
Menu .....	21
Title .....	21
Repeat A-B Mode .....	21
Repeat Playback Of Chapter/Title/All of a Disc.....	22
LCD Mode Menu .....	22
To access the USB/SD mode .....	22
SETUP .....	23
Language Setup .....	23
Video Setup .....	23
Audio Setup .....	24
Misc .....	24
SPECIFICATIONS .....	25
TROUBLESHOOTING .....	26
Declaration of conformity.....	28

# PACKAGE CONTENTS

Please make sure the following items are included in the package. If any items are missing, please contact your local dealer.



2 x ML9005



2 x stereo  
earphones



2 x 220V adapter



12V car adapter



AV cable



2x Remote control  
with battery






2x Car bracket

# ABOUT OPTICAL DISCS

## Disc Requirements

This DVD player supports playback of the following discs.

Type	Disc Mark	Content Type	Disc Size	Max. Playback Time
DVD-Video Discs		Audio + Video (moving picture)	12 cm	133 min (SS-SL)
				242 min (SS-DL)
				266 min (DS-SL)
				484 min (DS-DL)
Audio Compact Discs (CDs)		Audio	12 cm	74 min
JPEG CDs	--	Still Picture	12 cm	---
MPEG4	 (DivX and Xvid only)	Audio + Video	12 cm	600 min
MP3	--	Audio	12 cm	600 min

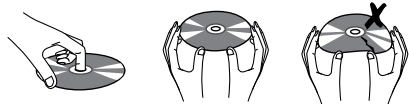
This unit can play back CD-R and CD-RW discs that contain JPEG picture files. Discs not listed above are not supported by this unit (eg, PC CD-ROM, CD-Extra, CD-G, CD-I, etc.)

## Disc Care and Maintenance

Optical discs (DVDs, CDs) contain high-density compressed data and need proper handling.

### **Handling a Disc**

- Hold a DVD/CD by its edges. Avoid touching the recorded side of the disc. To remove a DVD/CD from its storage case, press down on the center retention mechanism of the case and lift the disc out.
- Do not subject discs to prolonged exposure to direct sunlight, high humidity, or high temperatures.
- Do not bend or press discs.
- To reduce the risk of scratches, always put discs back in their case after use. Store discs vertically in a cabinet.
- Do not place stickers or labels on either side of a disc.



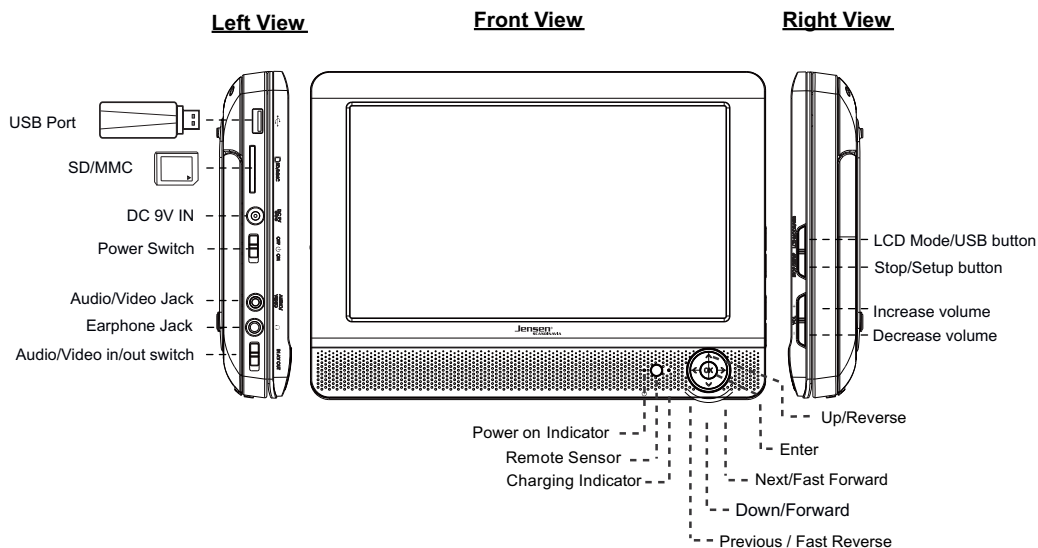
### **Cleaning a Disc**

Use a dry, soft cloth to wipe off any fingerprints and dusts from the playing surface of the disc. Wipe in a straight line radially from the center to the outside edge of the disc. Small dust particles and light stains will not affect playback quality.

- Never use chemicals such as record sprays, anti-static sprays, benzene, or thinners to clean a disc. Doing so will damage the surface of the disc permanently.



# LOCATION OF CONTROLS



## For your reference:

1. Place a disc with the label side facing up in the CD compartment.
2. To start playback, press the OK (Play/Pause/Enter) button. (Some discs will start playback automatically).
3. To stop playback, press the STOP button.
4. To play next / previous track, press the NEXT/PREVIOUS button.
5. To fast forward/reverse, repeatedly press and hold the NEXT/PREVIOUS button.
6. To slow-reverse/forward through the disc, press the Up/Down direction button.

## Left View

### **USB Port**

To connect a USB flash drive.

### **SD/MMC Card Slot**

To connect a SD/MMC card.

### **DC 9V IN**

Connect to the supplied AC Adapter or the DC Car Cord for power supply.

### **Power Switch**

Set the power on/off.

### **Audio/Video Jack**

Input/Output the audio/video signal.

### **Earphone Jack**

Connect to the earphone.

### **Audio/Video in/out switch**

Select whether the Audio/Video Jack operates in OUT or IN modem.

## Right View

### **LCD Mode/ USB button**

Press this button to display the LCD setting menu or enter USB menu.

### **Stop/Setup button**

Press to stop or enter Setup menu.

### **Increase volume**

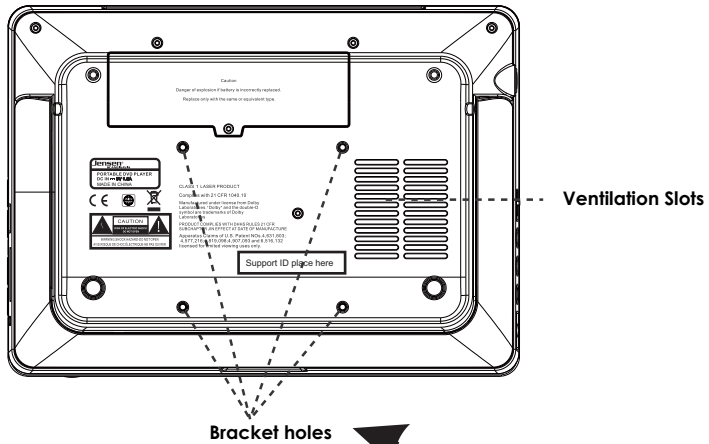
Press this to increase volume

### **Decrease volume**

Press this to decrease volume

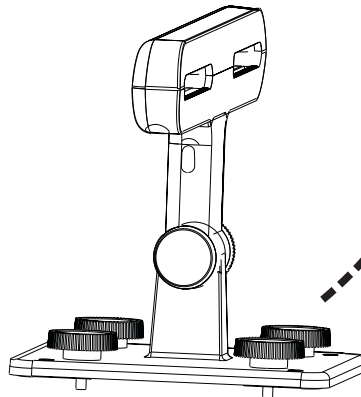
# LOCATION OF CONTROLS

## Back View



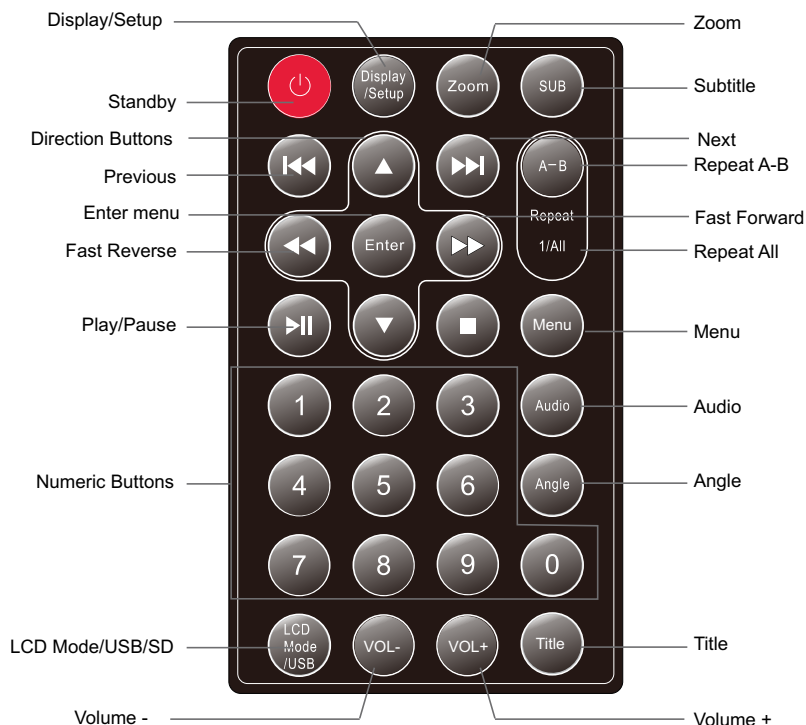
## Using the Stand

1. Lift up the stand from the groove.
2. Support the unit against the stand.



# LOCATION OF CONTROLS

## Remote Control



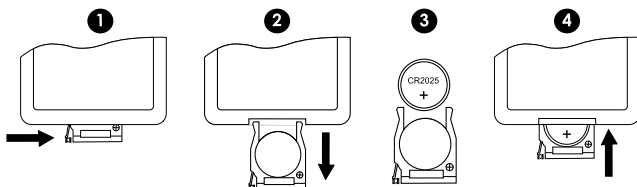
The remote control transmits a directional infrared beam. Be sure to aim the remote control directly at the infrared remote sensor during operation. The sensor may not be able to receive signals properly if the sensor is covered, if there is a large object between the remote control and the sensor, or if it is exposed to direct sunlight or a strong artificial light (e.g., fluorescent or strobe lights). In this case, change the direction of the light or reposition the unit to avoid direct lighting.

# GETTING STARTED

## Using the Remote Control

To load a battery in the remote:

1. Pull in the direction of the arrow.
2. Slide the compartment out.
3. Place the battery in the compartment with the positive side ( + ) facing up.
4. Push the compartment in to close.



- Point the remote at the remote sensor of the Portable media player at a distance of no more than 15 feet and at an angle no greater than 60 degrees.
- Batteries will last for about one year under typical usage.
- Replace the batteries if the remote is no longer working.
- Do not spill water on the remote control.
- Do not use the remote control for other equipment at the same time.
- Remove the batteries if the remote control will not be in use for an extended period of time.

## Power Supply

This unit should be used with 100-240V 50/60Hz AC wall outlets, only.

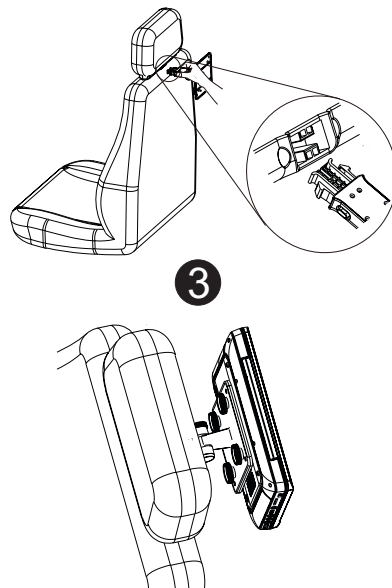
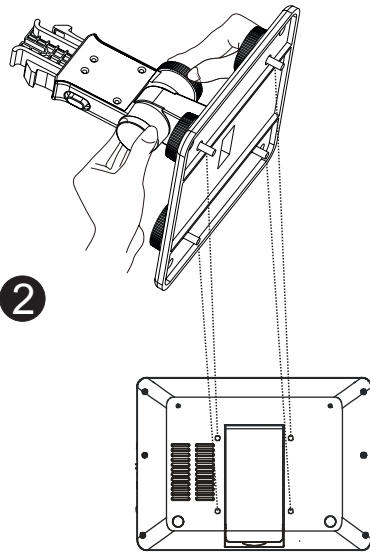
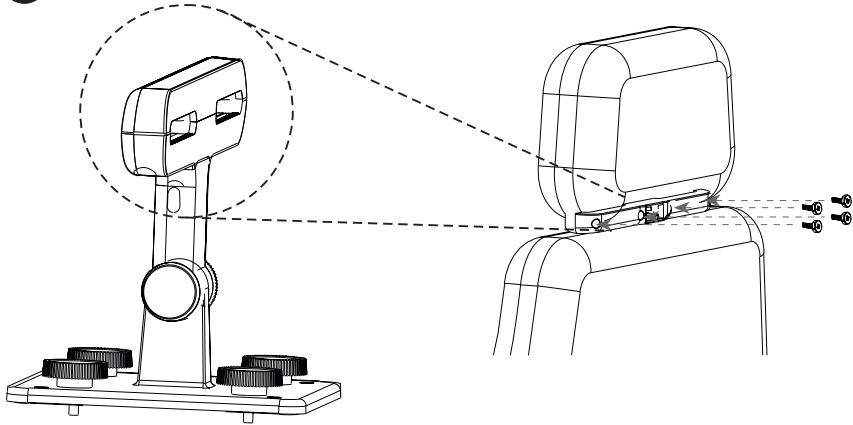
### **Caution:**

- *Do not connect the power plug to a power outlet other than that which is indicated here and on the label as this may result in the risk of fire or electric shock.*
- *Do not handle the power plug with wet hands. Doing so may cause electric shock.*

# GETTING STARTED

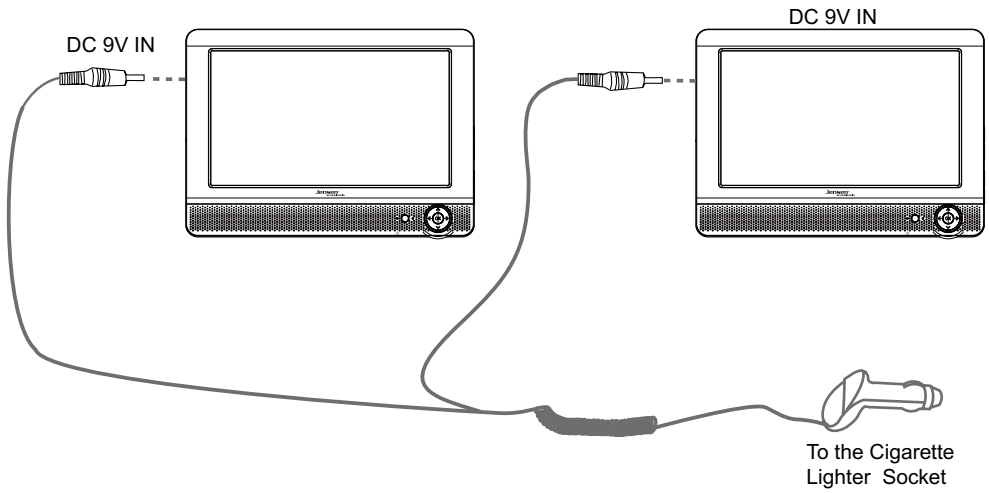
## Connecting the car bracket

1



# GETTING STARTED

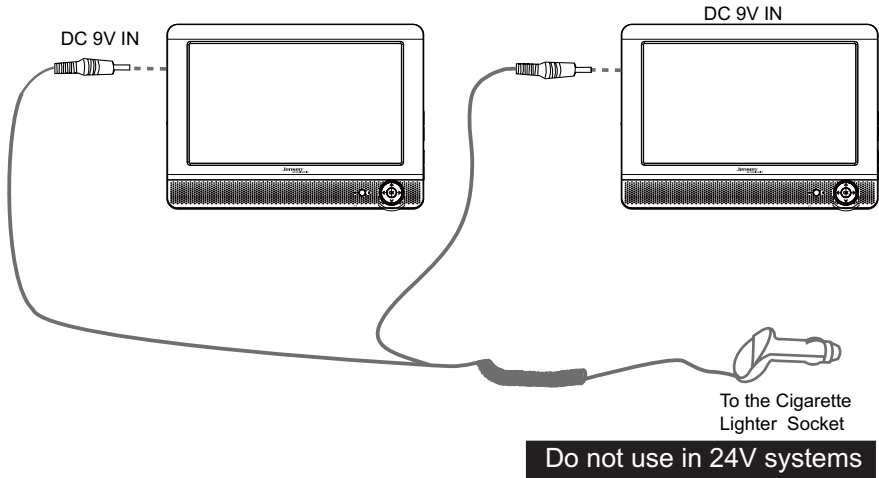
4



# CONNECTIONS

## Using the car plug.

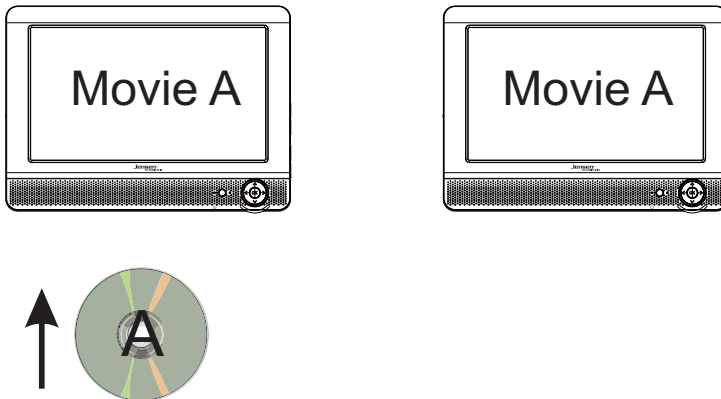
**WARNING:** Disconnect this car power adaptor when not in use.



## Whatch same movie on both units

1

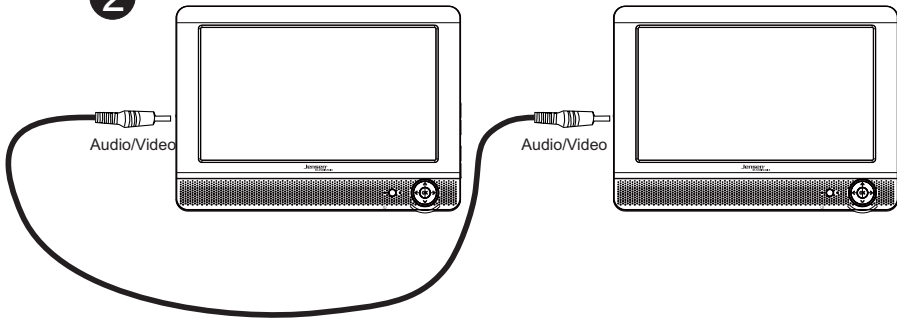
This way you can see the same movie on both units.



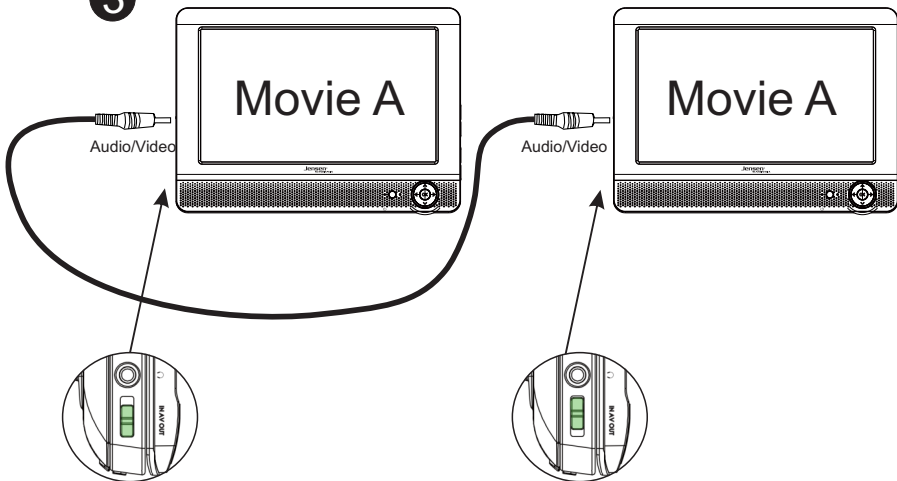
# CONNECTIONS

Whatch same movie on both units

2



3



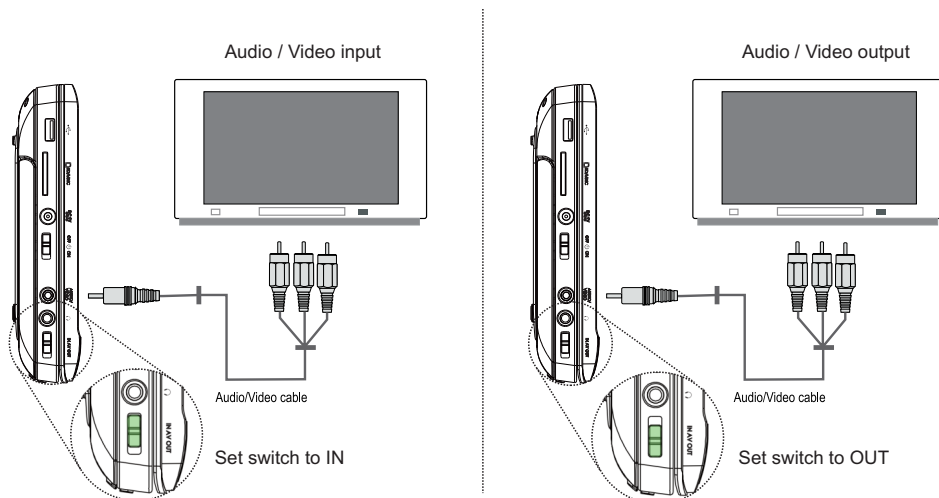
Set to AV OUT

Set to AV IN



# CONNECTIONS

## Audio and Video Connections (external device)



1. Refer to the owner's manual of the external device as well.
2. Before connecting the power source, ensure that all the connections are properly done.
3. If the player will not be used for a long period of time, disconnect the power and remove the battery from the remote control.

## Rechargeable Battery Pack

- For new or exhausted rechargeable battery pack, we recommend it be recharged for 4 hours.
- To charge the battery, just connect the AC adaptor.
- If the battery does not work to your expectation, please consult the service center. Do not attempt to replace or repair the battery by yourself.
- The battery can be recharged about 300 times without obvious performance drop.

### **Note:**

- Only use the provided charger to charge the battery.
- Never dispose off in fire or expose to heat.
- Do not use in high temperature or near heat sources .
- Do not open the cover. Refer servicing only to qualified service personnel.
- Danger of explosion if battery is incorrectly replaced. Replace only with the same or equivalent type.

### **Low Battery Detection**

- The unit will automatically go into STANDBY mode when the battery is low.

# CONNECTIONS

## Using Headphones / Earphones

### HEADPHONE VOLUME WARNING

Connect earphones with the volume set low and increase it if required. Prolonged listening through some earphones at high volume settings can result in hearing damage. When headphones/earphones are connected, no sound will be emitted from the unit's speaker.

Caution: Avoid listening to sound at levels which may be harmful to your ears.

***Continuous use of earphones at high volume can damage the user's hearing.***

## USB/SD/MMC Card Connection

Insert a USB or card into the corresponding slot.

1. Press the USB/SD button to display DISC/ SD/USB menu.
2. Press the Up/Down direction buttons to select USB or SD and press the OK (Play/Pause/Enter) button to start playback.
3. It takes a short while for the unit's reading data. After the device is detected, the screen will display the working menu, press the direction buttons to select the desired file from the menu and press OK (Play/Pause/Enter) button to start playback

# BASIC OPERATIONS

## Basic Playback

1. Prepare the connections and power supply.
2. Load a disc.  
Press the Open button to open the disc compartment lid. Load a disc with the label-side facing up. Close the lid manually. If a single-sided disc is loaded upside-down, the player will display "BAD DISC".
3. Start playback.  
Press Play/Pause button to start playback (some discs may start playing automatically).



### Play/Pause/Stop

- Press to play the disc for the first time.
- Press during playback to pause. Press again to resume playback.



- Press during playback to stop the disc ("Pre-Stop"). Press to resume playback.
- Press when the disc is "Pre-Stopped" to stop playback completely. (When is pressed, the disc will start playing from the beginning.)



### Next/Previous (Skip)

- Press to skip forward one track (DVD, CD, MP3, etc).



- Press to skip back one track (DVD, CD, MP3, etc).



### Forward/Reverse (Search)

Press / for a while to fast-forward / reverse through the disc.



- Each successive press of / will change the rate of fast-forward / reverse playback.

Play → x2 → x4 → x8 → x16



### Slow

To slow-reverse/forward through the disc, press the UP/DOWN direction button.



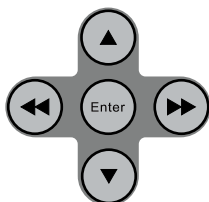
- Each successive press of DOWN/UP direction button will change the rate of slow-motion playback.

Play → x 1/2 → x 1/4 → x 1/6 → x 1/8

- Press to resume normal playback.

### **Note:**

*Audio will be muted during fast-forward, fast-reverse, and slow-motion playback*



### Menu Navigation

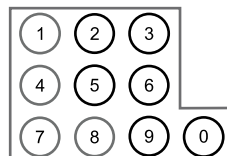
To navigate DVD disc menus or the player's setup menus:

- Press the DIRECTION keys (arrows) to select a desired feature or option in the menu
- Press ENTER to confirm a selection in the menu.
- For some menu options, you may be able to use the numeric keypad to input data.

# BASIC OPERATIONS

## Numeric Keypad

- Use the numeric keypad to skip directly to a DVD chapter or CD track. (Some discs may not allow direct access function.)
- Use the numeric keypad to input numeric data in menu option fields when possible.



## Adjusting the Volume

- Use the Volume + or - button to adjust volume level.

## Disc Error Messages

The following messages will be displayed on-screen if there is a problem with the format of the loaded disc.

- **WRONG REGIONAL DISC.** The region code of the disc does not match the player's region code (Region 4).
- **BAD DISC.** The player is equipped with automatic disc quality detection software. If the player detects a disc that is damaged or has a format problem, it may play the disc at a lower quality or stop play completely, depending on how damaged the disc is.

### **Note:**

DVD disc production quality may vary; some discs may deviate from the industry standard.

Some incorrectly-formatted discs may still play, however, the playback and operational quality of the disc may be substandard.

## Power Management

If the player will not be in use for a long period of time, set the Power Switch to the OFF position and unplug the player.

# FUNCTION BUTTONS

Display  
/Setup

## **Display/Setup**

- Press the DISPLAY button once to show playback information.
- Press it twice to enter the player's setup menu. Enter the Setup menu to adjust the player's internal settings, please see the SETUP section for more details.

Zoom

## **Zoom**

Press ZOOM to change the magnification level of the picture.

- During DVD playback, each successive press of ZOOM will change the level of magnification to:  
Zoom 1x, Zoom 2x, Zoom 3x, Zoom Off.
- In picture mode, each successive press of ZOOM will change the level of magnification to:  
Zoom 1x, Zoom 2x, Zoom 3x, Zoom Off.

When the magnification level is greater than Normal/100%, use the direction keys to pan around the magnified picture.

**Note:** The picture quality will decrease as the zoom level increases.

SUB

## **Multi-Subtitle / Audio / Angle**

- During playback of a DVD that has been mastered with subtitles, press SUBTITLE to view the available subtitle tracks. (A DVD may have up to 32 selectable subtitles.)
- During playback of a DVD that has been mastered with alternate language/audio tracks, press AUDIO to hear the alternate tracks. (A DVD may have up to 8 selectable audio tracks.)
- During playback of a DVD that has been mastered with multiple angles, press ANGLE to view the available alternate camera angles. (A DVD may have up to 9 selectable angles.)

Audio

Angle

Menu

## **Menu / Title**

Press the MENU button during DVD playback to return to the DVD's Main menu.

Title

Press the TITLE button during DVD playback to return to the DVD's Title menu.

A-B

## **Repeat A-B Mode**

To repeat playback of a specific section of a disc (loop):

1. Press A-B to set the desired start point ("A") of the section to be repeated.
2. Press A-B again to set the desired end point ("B") of the section to be repeated.
3. The section "A-B" will now play repeatedly as a loop. Press A-B again to resume normal playback.

1/All

## **Repeat Playback of Single/Folder/ALL of a Disc**

Press REPEAT to change the repeat mode of the player. Each successive press of REPEAT will change the mode as follows:

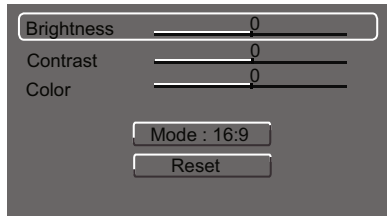
Repeat Single → Repeat Folder → Repeat All → Repeat Off

# FUNCTION BUTTONS



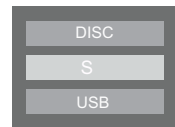
## **LCD Mode**

Press this button to display the LCD menu.



1. Press up/down direction button to select the desired item and then make adjustment by left/right direction button.
2. Press up/down direction button to select Mode and then press the Enter button to toggle the screen ratio between 16:9 and 4:3.
3. Select RESET and press ENTER to return the settings of brightness, contrast and color to their factory default settings.

**To access the USB/SD mode:** Insert a USB flash drive/SD card into the USB port / SD slot. Press the USB/SD button and select the device(Disc/SD/USB) you want to access.




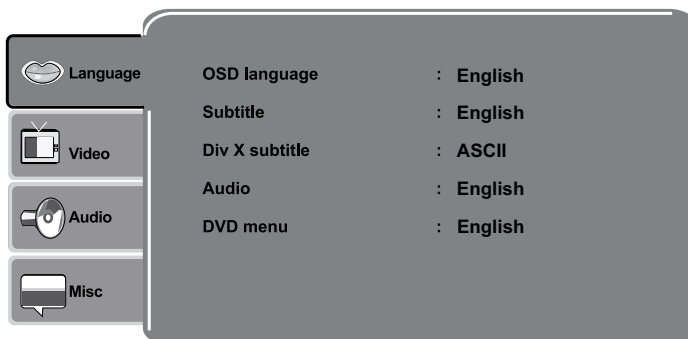
**DISC / SD/ USB**

# SETUP



Various features of the player can be adjusted in the SETUP menu.

1. Press  twice to enter the player's setup menu.
2. Press the direction buttons to select the desired item.
3. Press ENTER to confirm.



## Language Setup

Item	Description	Default Setting
OSD	Sets the language of the player's on-screen display.	English
Subtitle	Sets the default subtitle track of loaded DVDs.	English
Div X Subtitle	Sets the subtitle for DivX DVD.	ASCII
Audio	Sets the default language audio track of loaded DVDs.	English
DVD Menu	Sets the default menu language of loaded DVDs.	English

## Video

Item	Description	Default Setting
Aspect Ratio	Sets the aspect ratio of the display. 4:3 is used with standard television displays; 16:9 is used with widescreen television displays.	16:9
View Mode	Sets the view mode of DivX DVDs.	Auto Fit
TV System	Sets the player's Video Out signal type. Set this to correspond with your TV's Video System type. NTSC is the standard used in North America.	NTSC

# SETUP

## Audio Setup

Item	Description	Default Setting
Channel Output	Sets the audio channel mix mode.(Stereo, Lt/Rt)	Stereo

## Misc

Item	Description	Default Setting
Use Default Settings	Resets all settings to their factory default state.	Read
Screen saver	The screen saver prevents burn-in damage to the player's screen.	On
Disc Resume	Sets the disc resume.	On



# SPECIFICATIONS

Power supply	DC 9.0V 2A (AC adapter Terminal)
Power consumption	<= 8W
Signal system	NTSC /PAL
Video output	1±0.2V (p-p), 75ohm, Negative sync., 3.5 mm mini jack x1
Audio output	1.2 Vrms (1 KHz, 0dB), 3.5 mm mini jack x1
Earphone terminal	3 5mm stereo mini jack x1
Signal /Noise ratio(audio)	90dB typical
Dynamic range(audio)	90dB typical
Panel size	9 inch (16:9)
Resolution	640 (H) x 234 (V) (QVGA) Pixels
Laser	Wavelength 650 nm
Operating conditions	Temperature: 0℃ to 35℃ Operation status : Horizontal

*Specifications and manual are subject to change without prior notice.*

# TROUBLESHOOTING

## **Main Unit Troubleshooting**

### **There is no power to the device.**

- Ensure that the Power Switch on the main unit is physically set to the ON position.
- Ensure that the AC adaptor cord is securely connected to the player and the proper wall outlet.

### **The device will not play the disc.**

- Ensure that a supported disc is loaded in the player label-side up.
- Ensure that the disc is not damaged or too dirty.
- Clean the disc or try another disc. Moisture may have condensed inside the player. Remove the disc and leave the player on for 1-2 hours and then try again.

### **There is no picture.**

- Ensure that the TV set has been powered on and is set to the correct AV mode.
- Ensure that the connections between the player and the TV are secure and correct.
- Check if the connection cables are damaged.

### **The picture is noisy or distorted.**

- The disc may be damaged or dirty. Clean the disc or try another one.
- Reset your TV's color system.
- Ensure that the player is connected directly to the TV (and not through a VCR, cable box, satellite receiver, etc.)

### **The picture is not full-screen.**

- Change the aspect ratio setting of your player from the Setup menu.
- Select a different aspect ratio option from the DVD disc menu.

# TROUBLESHOOTING

## **There is no sound or distorted sound.**

- Ensure that the TV and amplifier have been turned on and properly set up.
- Ensure that the TV and amplifier connections are secure and correct.
- Try a different Audio track of the DVD by pressing AUDIO.
- Ensure that the MUTE function of the TV, Amplifier, or Player is not engaged.

## **The remote control doesn't work.**

- Ensure that the Power Switch has been physically set to the ON position.
- Ensure that there are no obstacles between the remote and the player.
- Point the remote at the remote sensor on the main unit.
- Ensure that the batteries in the remote retain a charge and have been installed correctly.
- Try replacing the remote's batteries.

## **The player has malfunctioned.**

- Unplug the player. After 30 minutes, plug in and power on the player -- the restore function should reset the player.

## **Monitor troubleshooting**

### **There is no power to the device.**

- Ensure that the Power Switch on the monitor is physically set to the ON position.
- Ensure that the AC adaptor cord is securely connected to the player and the proper wall outlet.

### **There is no sound or distorted sound.**

- Ensure that the AV cable connections are secure and correct.
- Ensure that the MUTE function of the monitor is not engaged.

### **The picture is noisy or distorted.**

- Reset the monitor's color system.
- Ensure that the AV cable connections are secure and correct.

# DECLARATION OF CONFIRMITY

## Declaration of Confirmity

For the following equipment:

Product name: **Jensen Media:Link 9005Duo**

is herewith confirmed to comply with the requirements set out in the Council Directive on the Approximation of the Laws of the Member States relating to Electromagnetic Compability (89/336/EEC), Lowvoltage Directive (73/23/EEC) and the Amandment Directive (93/68/EEC). For the evaluation regarding the Directives, the following standards were applied:

EN 301-357

The product also carries the CE mark according to the R&TTE directive 1999/5/EC.

The following manufacturer is responsible for this declaration:

Jensen Scandinavia AS  
Per Krohgsvej 4a  
1065 Oslo  
Norway



---

Technical Manager