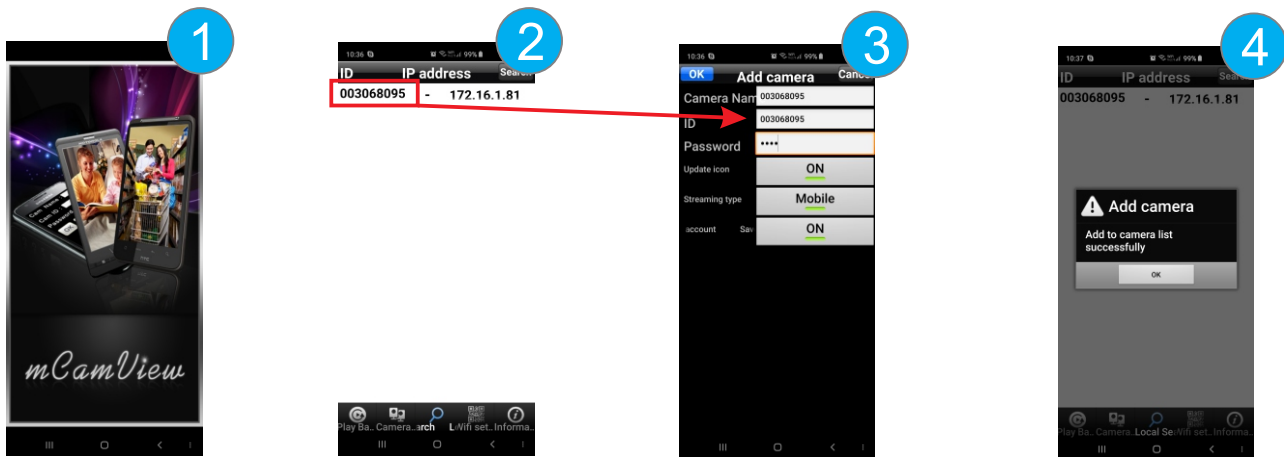
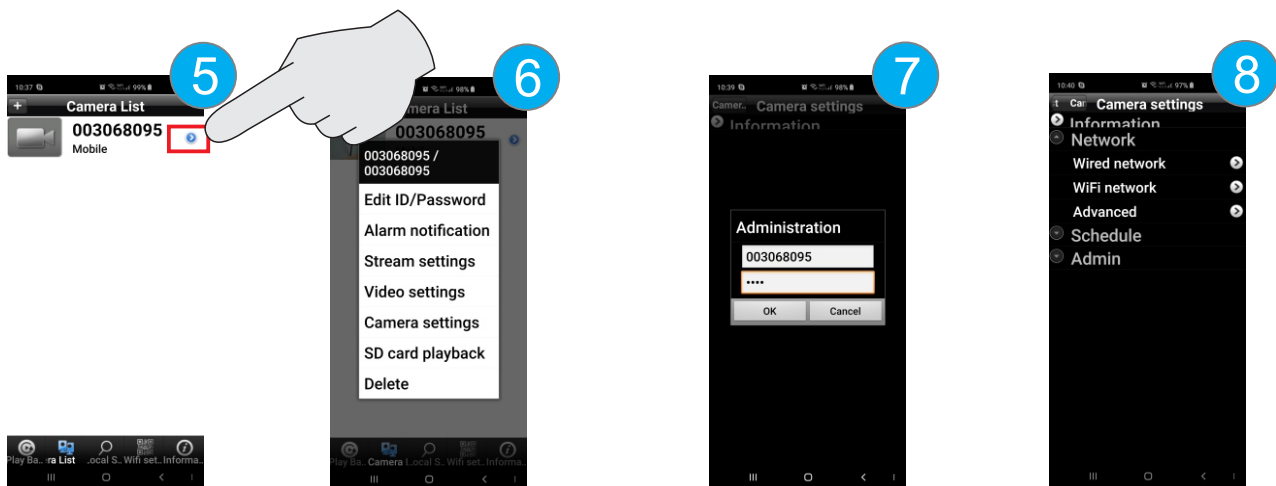


# How to setup WiFi on mCamview



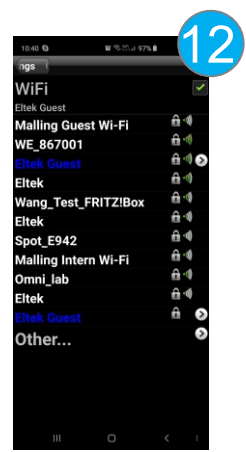
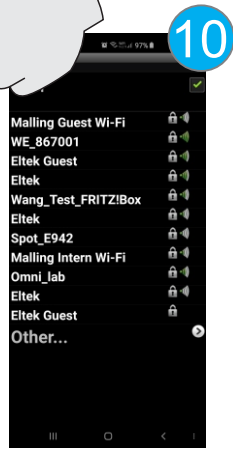
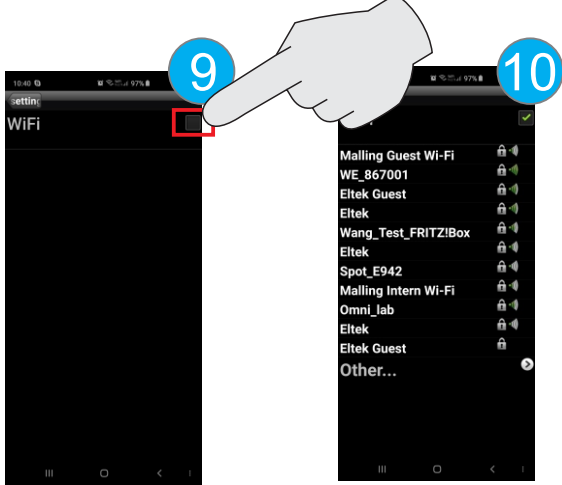
First you need to connect the camera to your wireless routers LAN port using a network cable. The Smartphone you are using need to be connected to the same WiFi network as the wireless router.

1. Open mCamView
2. Click Local Search and select the camera
3. Enter ID and password from your camera and click OK.  
\* ID and password can be found on backside of camera.
4. Click OK



5. The camera are now added.
6. Click blue arrow and then Camera Settings
7. Enter Camera ID and password and click OK. (Same as used in step 3)
8. Click network -> WiFi network

See next page



9. Activate WiFi

10. Select your WiFi network from the list

11. Enter password for WiFi network.

12. The camera should now be connected to your Wifi network and you can now disconnect the network cable from the router.