

AL7954 ABC

How to reset - page 1 1

How to setup security - page 2-3

How to change network name - page 4-5

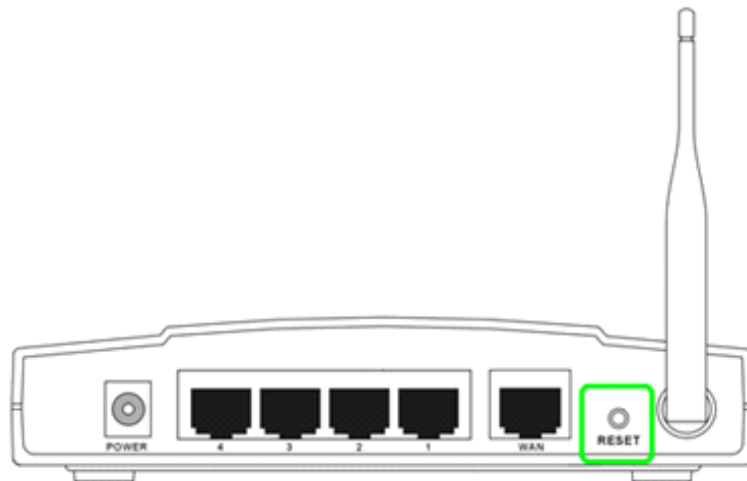
How to change channel - page 6-7

How to reset

If you cannot access the menu of your AL7954

or if you have forgotten the password, we recommend you to do a factory reset.

1. Unplug power of router.
 2. Press and hold the reset button (back of router) with a pen or paperclip, while at the same time putting the power back on.
- Keep the reset button pressed for about 20 seconds before you release it.



Now the router will be set back to factory default settings.

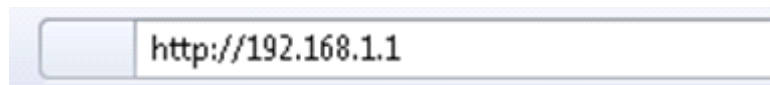
IPaddress: <http://192.168.1.1>

Username = admin

Password = admin

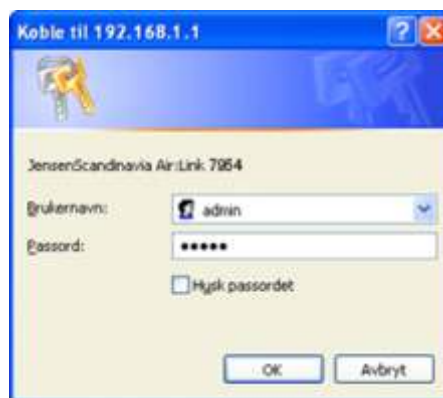
How to setup security

1. Log into router by enter http://192.168.1.1 in your browser.

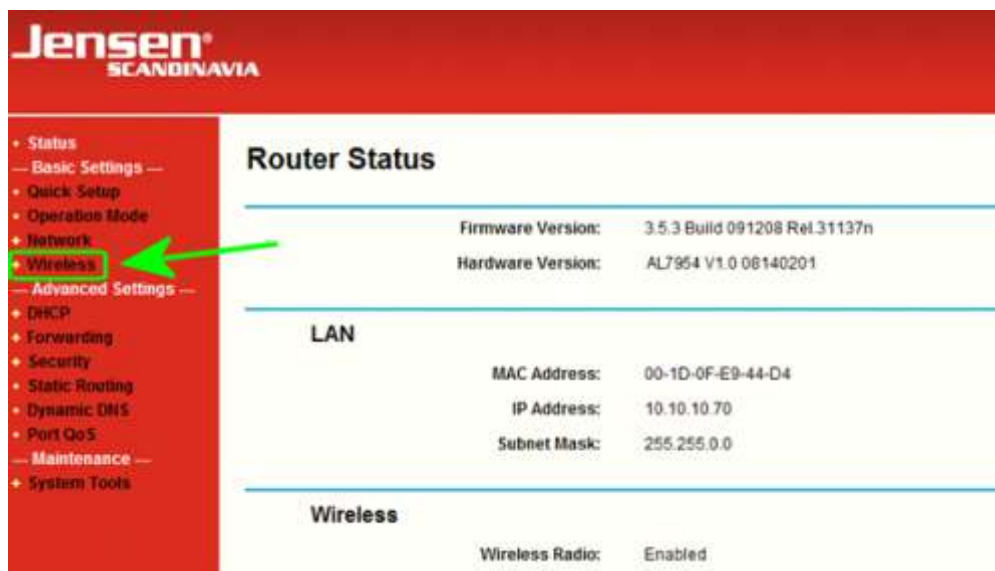


Note! If you cannot access the IP address above, please try connecting your computer to the router with a network cable in port 1,2,3 or 4 and then try again.

2. Username = admin og password = admin



3. Click Wireless



- Click «Enable Wireless Security»
Security Type = WPA-PSK/WPA2-PSK
Security Option = Automatic
Encryption = Automatic

In PSK Passphrase you can enter the encryption code you want to use for your wireless network. The key must have between 8 and 63 characters.

Wireless Settings

SSID: AirLink7954

Region: Norway

Warning: Ensure you select a correct country to conform local law. Incorrect settings may cause interference.

Channel: 1

Mode: 54Mbps (802.11g)

Enable Wireless Router Radio

Enable SSID Broadcast

Enable Wireless Security

Security Type: WPA-PSK/WPA2-PSK

Security Option: Automatic

Encryption: Automatic

PSK Passphrase: 12345678
(The Passphrase is between 8 and 63 characters long)

Group Key Update Period: 30 (in second, minimum is 30, 0 means no update)

Save

- Click Save

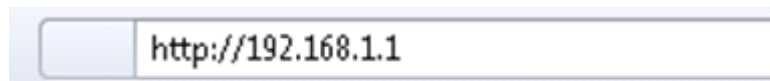
6. Your AL7954 is now secured with the new encryption key. You now have to connect all your wireless units again and then enter this new key.

How to change network name

As default the network name (SSID) for your Jensen AirLink7954 is set to "AirLink7954".

If you want to change this name you do it like this:

1. Log into router by enter http://192.168.1.1 in your browser.

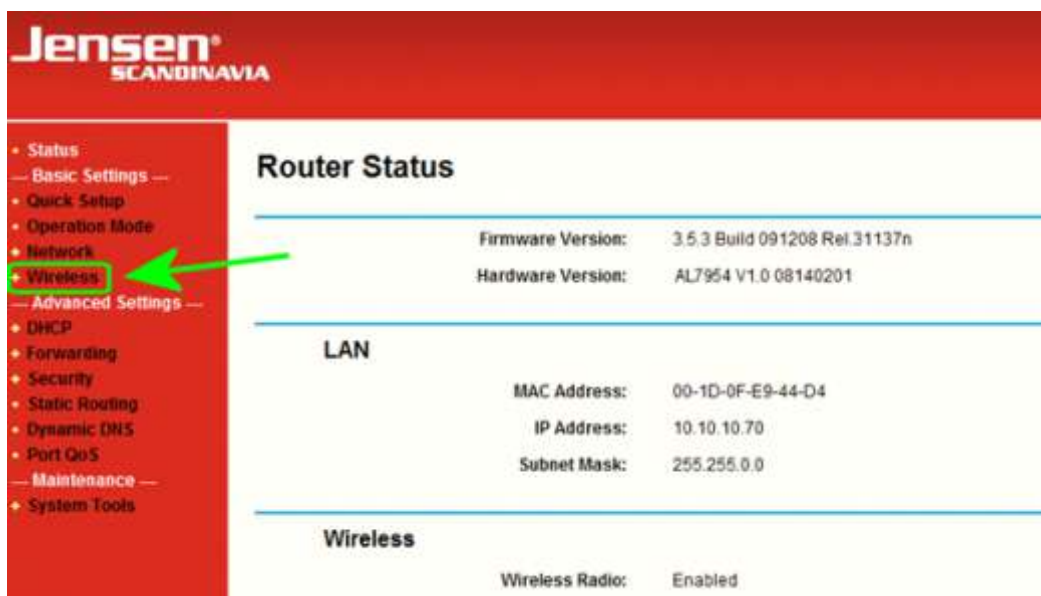


Note! If you cannot access the IP address above, please try connecting your computer to the router with a network cable in port 1,2,3 or 4 and then try again.

2. Username = admin og password = admin



3. Click Wireless



4. In the SSID field you can now change the name of your wireless network.
Note!! Do not use space or any special character in the network name.

Wireless Settings

SSID:

Region: Norway ▾

Warning: Ensure you select a correct country to conform local law. Incorrect settings may cause interference.

Channel: 1 ▾

Mode: 54Mbps (802.11g) ▾

Enable Wireless Router Radio

Enable SSID Broadcast

Enable Wireless Security

Security Type: WPA-PSK/WPA2-PSK ▾

Security Option: Automatic ▾

Encryption: Automatic ▾

PSK Passphrase:

(The Passphrase is between 8 and 63 characters long)

Group Key Update Period: (in second, minimum is 30, 0 means no update)

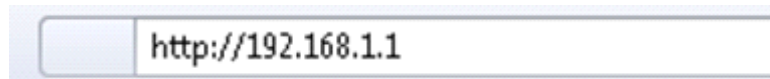
5. Click Save

6. The Wireless network name for your AL7954 is now changed.
Please do a search for available wireless networks and connect to your new one.

How to change the channel

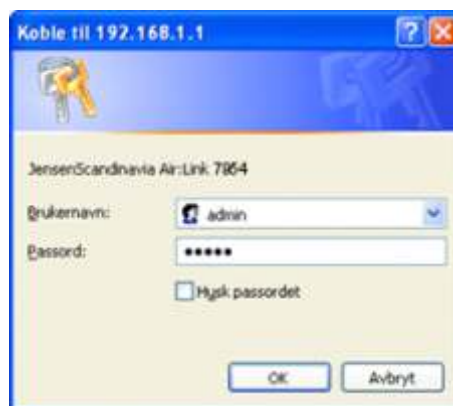
If you experience unstable wireless connection, the reason can be disturbance from other wireless network. In such cases we recommend changing * channel on your router.

1. Log into router by enter `http://192.168.1.1` in your browser.

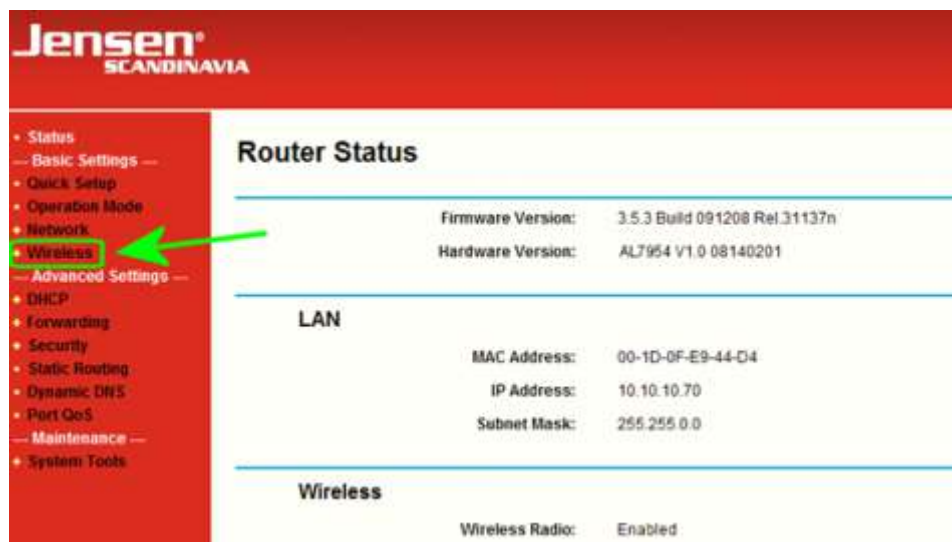


Note! If you cannot access the IP address above, please try connecting your computer to the router with a network cable in port 1,2,3 or 4 and then try again.

2. Username = admin og password = admin



3. Click Wireless



4. Please change the channel (1 to 13). The best choice is normally channel 1, 6 or 11, but it all depends on which channel the other wireless networks are using.

5. Click Save

6. Now the channel is changed. Use your wireless network for a while and see if there is any improvement. Otherwise do the same procedure again and select another channel.